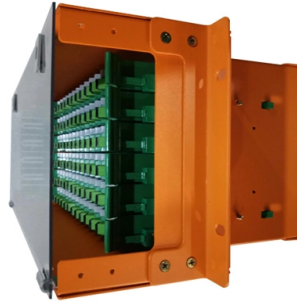


Wiring of grounding strip in distribution box



Overview

Attach a ground wire from one of the threaded studs (A) at the bottom of the housing, to the mounting plate (B). The ground resistance between all system parts shall be $<$. The correct connection method of Distribution box grounding wire mainly includes the following steps: 1. Each DISTRIBUTION BOX and controller must be grounded. 26 mm² (10 AWG) ground wire must be used, and in all other markets a 6 mm² must be used. And all the switching and protective devices are installed in the. Connecting wires to your home distribution box?

See how electricians do it professionally! From selecting the right wire gauge to safely connecting the main circuit breaker (MCB), residual current device (RCD), and grounding system, learn how to inspect wiring, properly strip wires, and s. more. Here are the steps on how to ground a power distribution box: 1.



Article Content

The installation requirements for the distribution box

Learn how to install a distribution box safely and correctly. Covers wiring, placement, standards, and expert tips for a compliant setup.

Size determination, installation method and wiring

The distribution box is the central hub of the home circuit and the general control of our daily power consumption. It is an indispensable electrical equipment. If there

The Importance of Ground Wires in the Breaker Box: A

The ground wire in a breaker box is a crucial element of an electrical system, providing safety and preventing electrical shocks. Learn more about its

Electrician connecting wires to a household distribution box

From selecting the right wire gauge to safely connecting the main circuit breaker (MCB), residual current device (RCD), and grounding system, learn how to inspect wiring, properly strip...

How to Wire an Electrical Circuit Breaker Panel

Open Knockouts in Box The electrician then opens metal knockouts for the main service conduit and each branch circuit that

Electrical Box Ground Wire Connectors & Connections

How to make proper & safe electrical ground wiring connections in the box: This article describes options for connecting a metal electrical box to the grounding conductor & connecting the grounding

DISTRIBUTION BOX

Each DISTRIBUTION BOX and controller must be grounded. On the US market, a 5.26 mm² (10 AWG) ground wire must be used, and in all other markets a 6 mm² must be used.

Single Phase Distribution Box (DB) Wiring Diagram and

The earth wire may come from the power supply cable or earth pit. Connect the both phase and neutral terminal of the load (which you want to

Distribution Box Wiring Steps

Wiring and Binding Wiring Direction: Wiring between the main circuit breaker and each branch circuit breaker in the box generally goes on the left,

Nine Recommended Practices for Grounding

Bond all metal enclosures, raceways, boxes, and equipment grounding conductors into one electrically continuous system. Consider the

How To Ground An Electrical Panel: 8 Steps With

While a ground wire is not strictly necessary for electrical equipment to function properly, licensed electricians are always careful about attaching this

How to Wire a Home Distribution Box

The above mentioned electrical wiring accessories and protective devices are used to control and distribute electric supply (safely to connected

200 amp disconnect and load center wiring and grounding

I installed a 200 amp circuit breaker load center (HOM3060M200PCVP) inside, both bus neutral/ground bars are connected and

How to Install a Cable Distribution Box Safely and

Misconception: If the cable distribution box is not grounded or has poor grounding, it is easy to cause electric shock accidents when the box is

Electrical Panel Grounding and Bonding

The topic of grounding and bonding is a never ending area of confusion. The difference between a service panel and a sub panel is also

How To Ground Electrical Enclosure: The Complete Guide

Proper electrical enclosure grounding is a vital facet for providing safety, performance and uptime. However, it is always easy to overlook

How do you ground a plastic electrical box

Here are the steps on how to ground a power distribution box: 1. Preparation: First, you need to prepare some necessary tools, including

Correct Connection Method Of Grounding Wire Of

Generally, copper core wire is selected as the ground wire and connected to the PE wiring bar. When connecting, it is necessary to strip the

Grounding System Installation Standards for Distribution Boxes and ...

Whether you're a seasoned pro or just starting out, this comprehensive guide will give you practical insights into proper grounding techniques, with a special focus on how selecting quality materials

Grounding Practices in Power Distribution Systems

The installation of grounding methods for transmission lines is absolutely necessary in order to guarantee the safety, dependability, and effectiveness of power

Electrical Panel Grounding Diagram and Wiring Setup

Learn how to create an electrical panel grounding diagram, ensuring safe and correct grounding connections for your electrical system.

Practice for good grounding and bonding a home wiring

Bonding and grounding explained All home electrical systems must be bonded and grounded according to code standards. This entails two tasks:

Industrial Automation Wiring and Grounding Guidelines

The grounding-electrode system is at earth-ground potential and is the central ground for all electrical equipment and ac power within any facility. Use 8 AWG copper wire minimum for the grounding

on video How to Wire a Home Distribution Box

How to Wire a Home Distribution Box - Step-by-Step | Distribution DB box wiring diagram Welcome to our channel! In this video, we'll walk you through the

9 Recommended Practices for Grounding

Use equipment grounding conductors sized equal to the phase conductors to decrease circuit impedance and improve the clearing time of

Contact Us

For more information, pricing, or custom solutions, please contact us:

Website: <https://www.kwsaevents.co.za>

Email: sales@kwsaevents.co.za

Phone: +27 21 852 4719

Address: 25 Riebeek Street, Cape Town, 8001, South Africa

This document is for informational purposes only. Specifications subject to change without notice.

