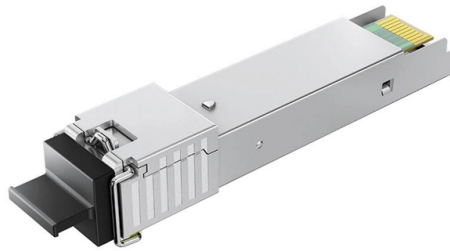


Sloping side of the cable tray



Overview

Calculate horizontal, vertical, or compound cable tray offsets based on bend angle, offset distance, and available installation space. Measure this distance along the straight tray. When developing our cable support OBO can offer reliable solutions for systems, three attributes are at the routing and fastening cables securely core of what we do: efficiency, resil- for each of these installation challeng-ience and safety. es in the industrial environment. It also demonstrates how Eaton's solutions and services can help: As an industry leader in cable tray, Eaton offers one of the widest ranges of. Is it possible to align the cable tray with a sloping framing or ceilings in Revit?

If the cable tray is moved instead of being sloping when using the align option, edit the Start or End Elevation of the cable tray to make it sloping. A rung spacing of 6 to 9 inches (150 to 230 mm) is preferable when the cable tray cont d for instrumentation and control applications that require. Understanding cable tray spacing is key to meeting safety regulations and maintaining system performance.



Article Content

FAQ | Cable Tray Institute

Cable Tray System FAQs National Electrical Code Question: We have a customer who would like to install the majority of cable tray in his new industrial facility in what I call an "Edge-Wise" orientation.

Best Practice Guide to Cable Ladder and Cable Tray Systems

This guide covers cable ladder systems, cable tray systems, channel support systems and associated supports intended for the support and accommodation of cables and possibly other electrical

Cable Tray Technical Guide A practical guide to product selection and ...

In designing supports for a cable tray system, consideration should be given to the loads associated with future cable additions and any additional loading that may be applied to the cable tray system (e.g.,

Tilted cable trays

Dear Forumusers, I'm modelling existing cable trays and they are tilted under different angles. I can only draw them horizontal and can't pick a

Understanding dictionary.get in Python

As you have found, `get` just gets the value corresponding to a given key. `sorted` will iterate through the iterable it's passed. In this case that iterable is a dict, and iterating through a dict

Understanding `.get()` method in Python

Here the `get` method finds a key entry for "e" and finds its value which is 1. We add this to the other 1 in `characters.get (character, 0) + 1` and get 2 as result.

GUIDE CABLE TRAYS TECHNICAL

In accordance with its continuous improvement policy, Legrand reserves the right to change the specifications and illustrations without notice. All illustrations, descriptions and technical information

Understanding `__get__` and `__set__` and Python descriptors

Non-data descriptors, instance and class methods, get their implicit first arguments (usually named `self` and `cls`, respectively) from their non-data descriptor method, `__get__` - and this

Cable Tray Spacing Standards for Installation and Safety

This article provides an in-depth look at the cable tray spacing standards that should guide your next installation project. Let's dive deeper into the specific cable tray spacing

javascript

44 I am making this simple get request using jquery ajax: ... It's returning an empty string as a result. If i go to this link in my browser, i get: ... which is the expected result. So why isn't it working using ajax?

What is the "get" keyword before a function in a class?

Summary: The get keyword will bind an object property to a function. When this property is looked up now the getter function is called. The return value of the getter function then determines which

Cable Tray Offset Calculator | Vertical, Horizontal & Compound Offset

Cable Tray Bend Offset Calculator Calculate horizontal, vertical, or compound cable tray offsets based on bend angle, offset distance, and available installation space.

B-Line series Cable Tray Design Considerations

Most outdoor cable tray systems are ladder type tray, and the most severe wind loading will be the impact pressure to the cable tray side rails. The generic impact pressures corresponding to various

Types of Cable Trays - Purpose, Advantages,

Cable tray is alternatives to wire ways and electrical conduits, which completely enclose cables. Study types of cable trays, purpose, advantages.

Cable Trays Installed Vertical In A Different Manner | Eng-Tips

This may sound dumb, but it happens when somebody non-electrical plays electrical. We have been routing our cable trays horizontally along the conveyors as per code and standard

Why doesn't list have safe "get" method like dictionary?

172 Ultimately it probably doesn't have a safe .get method because a dict is an associative collection (values are associated with names) where it is inefficient to check if a key is present (and return its

Cable tray

In the electrical wiring of buildings, a cable tray system is used to support insulated electrical cables used for power distribution, control, and communication. Cable

What is the { get; set; } syntax in C#?

When implementing a get/set pattern, an intermediate variable is used as a container into which a value can be placed and a value extracted. The intermediate variable is usually prefixed with an

Best Practice Guide to Cable Ladder and Cable Tray Systems

This publication is intended as a practical guide for the proper and safe* installation of cable ladder systems, cable tray systems, channel support systems and associated supports.

CABLE TRAY SYSTEMS GUIDE

Some applications may require the cable tray to support the weight of a single, dead object in addition to the cable loads. Specifications typically require this to be applied at the midpoint of the span between

HTTP GET request in JavaScript

I need to do an HTTP GET request in JavaScript. What's the best way to do that? I need to do this in a Mac OS X dashcode widget.

Cable tray with gently sloping side ramp (extendable model) 90 cm

Ideal when the number of cables is large. The ramps on both sides are very sloping to facilitate crossing (wheelchairs/prams/trucks/cars) and are installed separately.

cable tray sloping

hi how can i make my cable tray slope, instead of 90 degree bends, i have two cable trays at 2 different heights i would like to connect them using a sloping method, say 45 degree angle, how

Cable Tray Systems: A Complete Guide to Types

Discover the essential guide to cable tray systems. Learn about ladder, trough, and wire mesh types, key components, and expert installation

Guide to cable support systems

Side heights of 35, 60, 85 and 110 mm are available, through to special cable tray systems with a 30% perforation amount and large insertion and exit points.

Depending on the system, screwable or

How to align cable tray into a sloping framing or ceilings in Revit

Use the following steps to adjust cable trays with sloping elements using align option: If the cable tray is moved instead of being sloping when using the align option, edit the Start or End

Cable tray with gently sloping side ramp (extendable model) 90 cm

Cable tray, which can be extended in the cable tray without limit in width. Ideal when the number of cables is large.

Contact Us

For more information, pricing, or custom solutions, please contact us:

Website: <https://www.kwsaevents.co.za>

Email: sales@kwsaevents.co.za

Phone: +27 21 852 4719

Address: 25 Riebeek Street, Cape Town, 8001, South Africa

This document is for informational purposes only. Specifications subject to change without notice.

