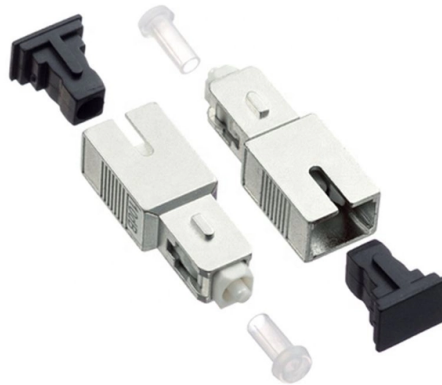


# Requirements for partitions in high-voltage electrical distribution boxes



## Overview

This document applies to pressurized partitions used in indoor and outdoor installations of high-voltage AC and DC switchgear and controlgear with rated voltages ( $U_r$ ) above 1 kV AC / 1,5 kV DC and with design pressure higher than 300 kPa, where the gas is used principally for its. This document applies to pressurized partitions used in indoor and outdoor installations of high-voltage AC and DC switchgear and controlgear with rated voltages ( $U_r$ ) above 1 kV AC / 1,5 kV DC and with design pressure higher than 300 kPa, where the gas is used principally for its. Switchgear in the far room operates at 12,470 volts while equipment in the closest room operates at 480 volts. The 3 hour barrier and fire rated door creates the suitable partition required by the new code section. Are there any other issues to be concerned about in the image?

Code Change Summary:. NFPA LiNK is an innovative digital platform that provides instant access to 1,400 NFPA codes and standards including the NEC, along with exclusive expert commentary, visual aids, and more. The applicable part of 110 is Part III: Over 1,000 Volts, Nominal. Specifically. These requirements vary depending on whether the electrical equipment is rated at (1) 1,000 volts or less (See, Article #2) or (2) over 1,000 volts. Minimum clearances in front of electrical equipment (600 V (now 10000 V) or. When high-voltage power distribution and cable termination are required, safety, enclosure integrity and long-term reliability are critical.

## Article Content

110.26 (A) (5) Separation from High-Voltage Equipment.

Code Change Summary: A new code section requires separation when equipment operating at 1000 volts or less is located in the same vault, room or enclosure as

National Fire Protection Association Report

Ungrounded conductors shall be attached to insulators or be terminated in approved high-voltage cable couplers (which include equipment grounding conductor connectors) of proper voltage and ampere

Eabel Guide to Electrical Panels & Switchgear: Design,

Secondary Distribution / Panelboards: distribute power to final equipment and usually require full de-energization for maintenance unless

Transformer and distribution cabinet equipment installation, standards ...

Equipment installation location requirements Transformer rooms, capacitor rooms, distribution device rooms, and control rooms should not have irrelevant pipes passing through them.

Understanding Distribution Boxes: Your Guide to Power

Floor-Standing Distribution Boxes Meant for high capacity systems, these boxes are larger and put on the floor, making them common in industrial or

Planning of Electric Power Distribution

To this end, we are launching a new series, whereby volume 2 will consist of several individual modules. This newly designed first volume, "Planning of Electric Power Distribution - Technical Principles",

Optimal Selection of High and Low Voltage Distribution Cabinets in ...

The distribution cabinets in the distribution room represent the final link delivering electrical energy to end-users. Ensuring the stability and economy of these high and low voltage distribution cabinets,

Separation From High-Voltage Equipment | UpCodes

This separation is necessary when the low-voltage equipment operates at 1000 volts or less, while the high-voltage equipment exceeds this threshold. Effective barriers like partitions, fences, or screens

048-213a dd

Explanation Manufacturers of multi-gang boxes also produce low-voltage partitions that can be installed into the electrical back-box. For example, the Hubbell RACO® catalog includes a partition for 1-5/8 in

## Electrical Rooms Part 2

Any exposed live parts adjacent to the electrical room, vault, or enclosure entrance must be suitably guarded. Other exposed parts may require

### TECHNICAL SPECIFICATION FOR LT DISTRIBUTION BOX

The normal duty and heavy duty suspension, light duty, normal duty and heavy duty tension insulator sets shall all comply with the technical requirements and satisfy the test requirements

### Power Distribution Boxes Explained Simply

Learn what a power distribution box is, how it works, key components, types, and why it's vital for safe and efficient electrical systems.

### Outdoor Electrical Distribution Box Specifications: NEC

Complete specification guide for outdoor electrical distribution boxes covering NEC Article 312 requirements, NEMA ratings, sizing calculations, and

### Best Material for LV Distribution Box | Axis Electricals

What is an Electrical Distribution Box? A distribution box is a key component of an electrical supply system. From a single, common enclosure, it

### HV Junction Boxes Guide 11kV-66kV Enclosures | Abtech

A quick guide to HV junction boxes for 11kV-66kV systems, covering applications, safety and enclosure selection.

### Power Distribution Boxes Explained Simply

Discover the essentials of a Power Distribution Box—how it works, key types, benefits, and tips to ensure safe, efficient electrical power management.

### High Voltage Electrical Cabinet | Custom High Voltage Switchgear ...

Explore Gaobo's custom high voltage cabinets, including switchgear, electrical boxes, and switch panels. Reliable, quality-assured solutions for industrial power distribution needs.

### 110.26 (A) (5) Separation from High-Voltage Equipment.

2017 Code Language: N 110.26 (A) (5) Separation from High-Voltage Equipment. Where switches, cutouts, or other equipment operating at 1000 volts, nominal, or

### Substation layout

Today we will introduce to you how to arrange each area of substation layout and the specific requirements. 1. Requirements for substation layout. ①

### Understanding Distribution Boxes: A Comprehensive

A distribution box, also known as a power distribution box or electrical distribution box, is used to distribute electrical power safely to multiple

## WORK ON HIGH VOLTAGE PLANT AND APPARATUS

WORK ON HIGH VOLTAGE PLANT AND APPARATUS OPERATIONAL SAFETY MANUAL - SECTION 6.3 Scottish and Southern Electricity Networks is a trading name of: Scottish and Southern Energy

High Voltage (HV) Hazardous Area Electrical Enclosures & Junction Boxes ...

T& D are Main Distributors for Abtech – high voltage junction boxes and electrical enclosures for MV-HV electrical power distribution. High voltage (HV) enclosures can be drilled to accommodate single or

Installation and Wiring of High and Low Voltage Explosion-Proof ...

Explosion-proof distribution boxes, vital terminal distribution equipment in power systems, play a crucial role in controlling and protecting industrial electricity in hazardous environments. Given

NEC Article 110.34: Electrical Room "Basics"

Minimum clearances are established for work spaces in front of high voltage - electrical equipment such as switchboards, control panels, switches, circuit

DB BOX (Electrical Distribution Box): Everything You

From low-voltage to high-voltage systems, and from indoor to outdoor installations, there is a suitable DB Box for every situation. At QINJIA

Complete Guide For Distribution Boxes Types

Distribution boxes, also known as electrical distribution boards or panels, are pivotal components in electrical systems, ensuring the safe and organized distribution of

## Contact Us

For more information, pricing, or custom solutions, please contact us:

Website: <https://www.kwsaevents.co.za>

Email: [sales@kwsaevents.co.za](mailto:sales@kwsaevents.co.za)

Phone: +27 21 852 4719

Address: 25 Riebeeck Street, Cape Town, 8001, South Africa

This document is for informational purposes only. Specifications subject to change without notice.

