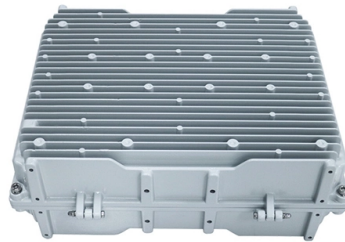


# Does an optical network need a switch



## Overview

Optical switches, a key component in modern network infrastructure, are devices used in optical fiber networks for signal management. Unlike traditional electrical switches, which transmit data as electrical signals, optical switches handle data transmission in the. Optical switching represents a fundamental technological evolution, shifting data routing from the domain of electrons to the realm of photons, or light. They're a core component in fiber-optic networks, where data travels as pulses of light through glass fibers. Every time that light needs to change direction or jump. People call the ONT a “magic box” or a “ fiber modem. An ONT is a strict photoelectric translator. When the ISP's central OLT (Optical Line Terminal) transmits data, it. This paper first summarizes the topologies and traffic characteristics in data centers and analyzes the reasons and importance of moving to optical switching.



## Article Content

### What Are Optical Switches and How Do They Work?

Optical switches redirect light signals without converting them to electricity. Learn how they work, their types, and why they matter for modern networks.

### Optical Switching Data Center Networks: Understanding Techniques

The optical circuit-switched network, implemented by a single or an array of slow optical switches like MEMS, provides large capacity links for high-volume and slow-changing traffic.

### All-Optical Ethernet Switch Explained: Features and

Discover what an all-optical Ethernet switch is, how it works, and the key benefits it brings to modern networks, from higher bandwidth to lower latency.

### What is ONT? The Engineer's Guide to Optical Terminals

Standard IT hardware only understands electrical signals. You need a media converter at the absolute edge of the network. That is what an ONT (Optical Network Terminal) does. If you are buying FTTH

### Understanding the Role of an Optical Network

What does an ONT do? Does one still need a modem or router in conjunction with an ONT? With the help of this article, you will be able to answer

### ONU vs Router vs Switch: Key Differences in Fiber Network Devices

Understand how ONU, router, and switch differ in role, function, and deployment in modern fiber networks. Essential guide for ISPs and enterprise users.

### What is the role of an optical switch, and how does it

Optical switches, however, provide a high-speed data exchange method that eliminates the need for conversion to electrical signals, significantly improving

### What is an Optical Network Terminal (ONT)? Your

An Optical Network Terminal (ONT) links your home to fiber-optic internet. It turns light signals into digital data for your devices. You cannot use

### What Are Optical Switches and How Do They Work?

Optical switches operate purely at the physical layer of the network, meaning they are concerned only with the physical path of the light beam. Because the signal remains as light, the

### What is an optical network terminal (ONT)?

An optical network terminal is a device that connects a customer's premises to an optical network. Learn all about ONTs, how they work, and why

### Optical Switching Basics: Types and Technologies

Explore the fundamentals of optical switching, including space, wavelength, time, and hybrid switching techniques. Learn about core components and applications.

### What is an Optical Switch?

An optical switch is a multi-port network bridge, which connects multiple optic fibers to each other and controls data packets routing between

### What Is an ONT? Optical Network Terminals Explained

An ONT (or optical network terminal) has a pivotal role in a fiber internet system. How exactly does it work? We explain in this guide.

### ONT...What is it and how is it used in a fiber network?

But what exactly is it—and do you need one? An ONT, or Optical Network Terminal, is a device that converts fiber optic signals from your Internet provider into

### Optical Switch and Its Practical Application Scenario

Optical switches are crucial in situations where multiple optical signals need to be efficiently managed and directed to their intended destinations. How Does an

### What Is an ONT & How Is It Used in Fiber Networks?

ONT stands for Optical Network Terminal. An ONT is a device that translates light signals sent through fiber optic cables into data that your devices can

### Optical Switches | How it works, Application & Advantages

Optical switches, a key component in modern network infrastructure, are devices used in optical fiber networks for signal management. Unlike

### Unlocking the Potential of a Fiber Optic Switch in Modern Networks

Discover how a fiber optic switch can enhance your fiber network, improving data transmission with speed and reliability across Ethernet and optical connections.

### ITPro Today, Network Computing, IoT World Today combine

ITPro Today, Network Computing and IoT World Today have combined with TechTarget . The page you are looking for may no longer exist.

### What Are Optical Switches and How Do They Work?

Fiber-optic networks that carry multiple wavelengths of light simultaneously through a single fiber (a technique called wavelength-division multiplexing) rely on optical switches to route

## Optical Switch

Optical switches are defined as devices used in optical communications networks to switch signals optically rather than electronically, allowing for reduced power consumption compared to

### A Quick Guide to ONT (Optical Network Terminal)

Understand how an Optical Network Terminal (known as an ONT) functions, how it differs from Optical Line Terminal (OLT), and its Role in

### Everything You Need to Know About Fiber Optic Switches | Alpha NSN

Everything There Is to Know about Fiber Optic Switches Fiber optic technology is widely recognized for significantly advancing modern networking by enabling high-speed, low-latency, and interference

### What Is Passive Optical Networking (PON)?

Passive optical networking (PON) provides Ethernet connectivity from a main data source to endpoints, using a technique called passive optical splitting.

### Design and implementation of optical switching network OSN

The optical switch played a part in this, coinciding with the advancement of communication systems and the growing demand for networks that carry data fast and efficiently.

### ONT (Optical Network Terminal): A Detailed Guide

ONT or Optical Network Terminal is a device that can get a fiber-optic internet connection in your home or office by communicating directly with ISP (Internet

### Where and How to Use Optical Switches?

As networks continue to evolve, optical switches will remain a cornerstone technology, providing the adaptability needed to meet the demands

### Optical Switches | How it works, Application & Advantages

Explore the world of optical switches, their workings, evolution, advantages, and limitations in modern network infrastructure.

## Contact Us

For more information, pricing, or custom solutions, please contact us:

Website: <https://www.kwsaevents.co.za>

Email: [sales@kwsaevents.co.za](mailto:sales@kwsaevents.co.za)

Phone: +27 21 852 4719

Address: 25 Riebeeck Street, Cape Town, 8001, South Africa

This document is for informational purposes only. Specifications subject to change without notice.

